



Annual Report

GBV AoR Regional Support Teams

Period Covered by this Report: 1 January - 31 December 2020



Contact the GBV AoR

Website <https://gbvaor.net/>
Email gbvaor@unfpa.org
Address Gender-Based Violence Area of Responsibility
(UNFPA)
Rue de Varembé 7
1202 Genève 10
Switzerland





 www.facebook.com/gbvaor1
 www.twitter.com/GBVAoR1
 <https://tinyurl.com/d7eem4cs>
 www.soundcloud.com/user-188404020

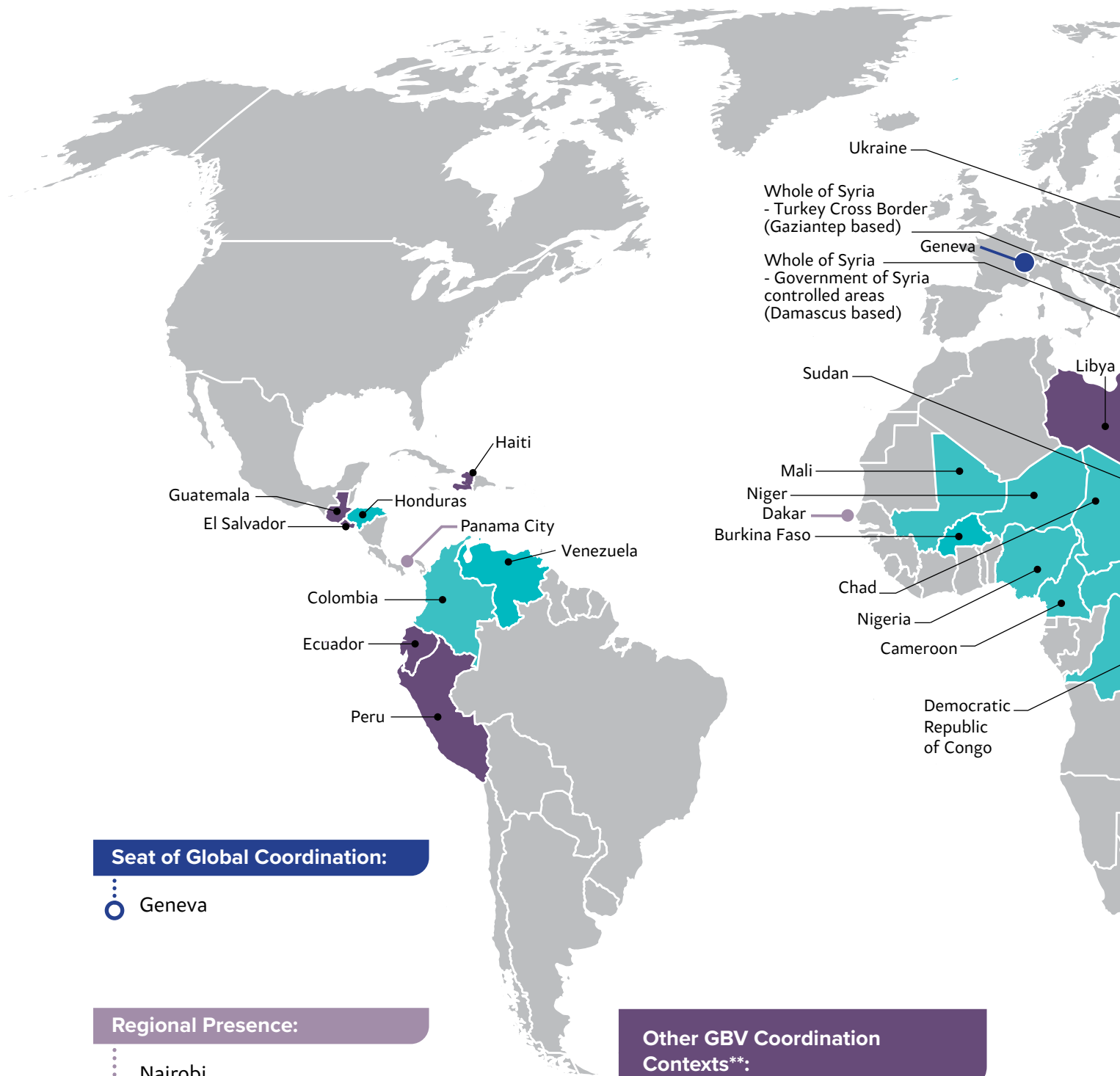
Photo credits:

Albert González Farran/ UNAMID (cover)
ICRC (cover)
Benny Manser/ UNFPA (cover)
Amanda Nero/ IOM 2018 (cover)
Veejay Villafranca/ IFRC (cover)
ICRC (page 8)
ICRC (page 11)
Ryan Brown/ UN Women (page 12)
IOM (page 13)
IOM (page 14)
UNFPA (page 17)
UNFPA Mozambique (page 25)
Albert González Farran/ UNAMID (page 26)
Albert González Farran/ UN (page 28)

CONTENTS



MAP	4
GBV AoR COORDINATION TEAM	6
GLOSSARY	7
EXECUTIVE SUMMARY	9
1. INTRODUCTION	13
2. OVERVIEW OF THE SCALE-UP	14
3. 2020 HIGHLIGHTS	15
4. BROADER CAPACITY BUILDING AND UNIVERSITY PARTNERSHIPS	24
5. ADVOCACY	27
6. RISING TO THE CHALLENGE: A YEAR OF TRANSITION	29
ANNEX I. REGIONAL TEAMS SCALE-UP	30



Seat of Global Coordination:

- Geneva

Regional Presence:

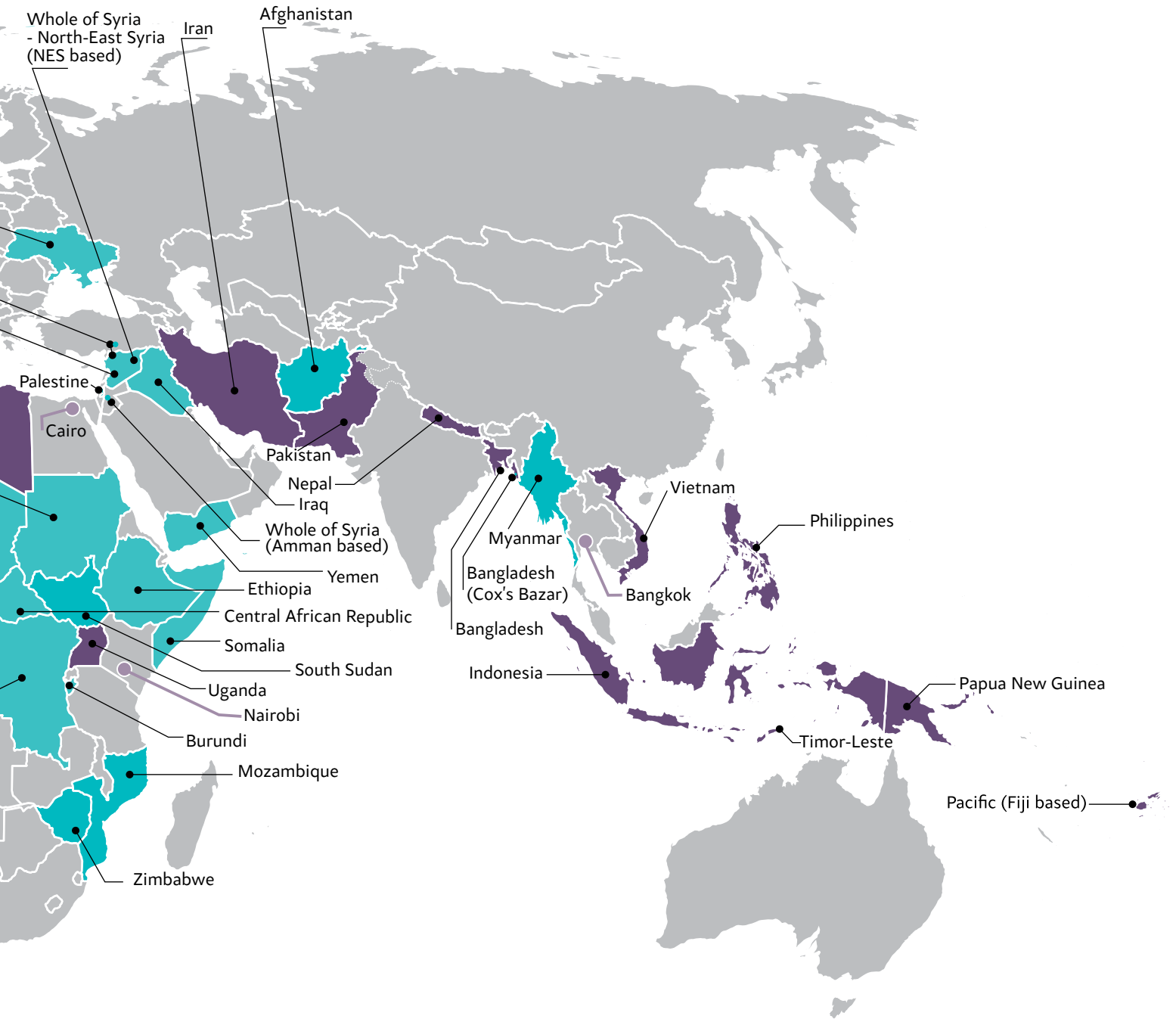
- Nairobi
- Bangkok
- Dakar
- Cairo
- Panama City

Other GBV Coordination Contexts:**

- Bangladesh
- Ecuador
- El Salvador
- Guatemala
- Haiti
- Indonesia
- Iran
- Libya
- Nepal
- Pacific (Fiji based)
- Pakistan
- Peru
- Philippines
- Papua New Guinea
- Timor-Leste
- Uganda
- Vietnam

* Dotted line represents approximately the Line of Control in Jammu and Kashmir agreed upon by India and Pakistan. The final status of Jammu and Kashmir has not yet been agreed upon by the parties.

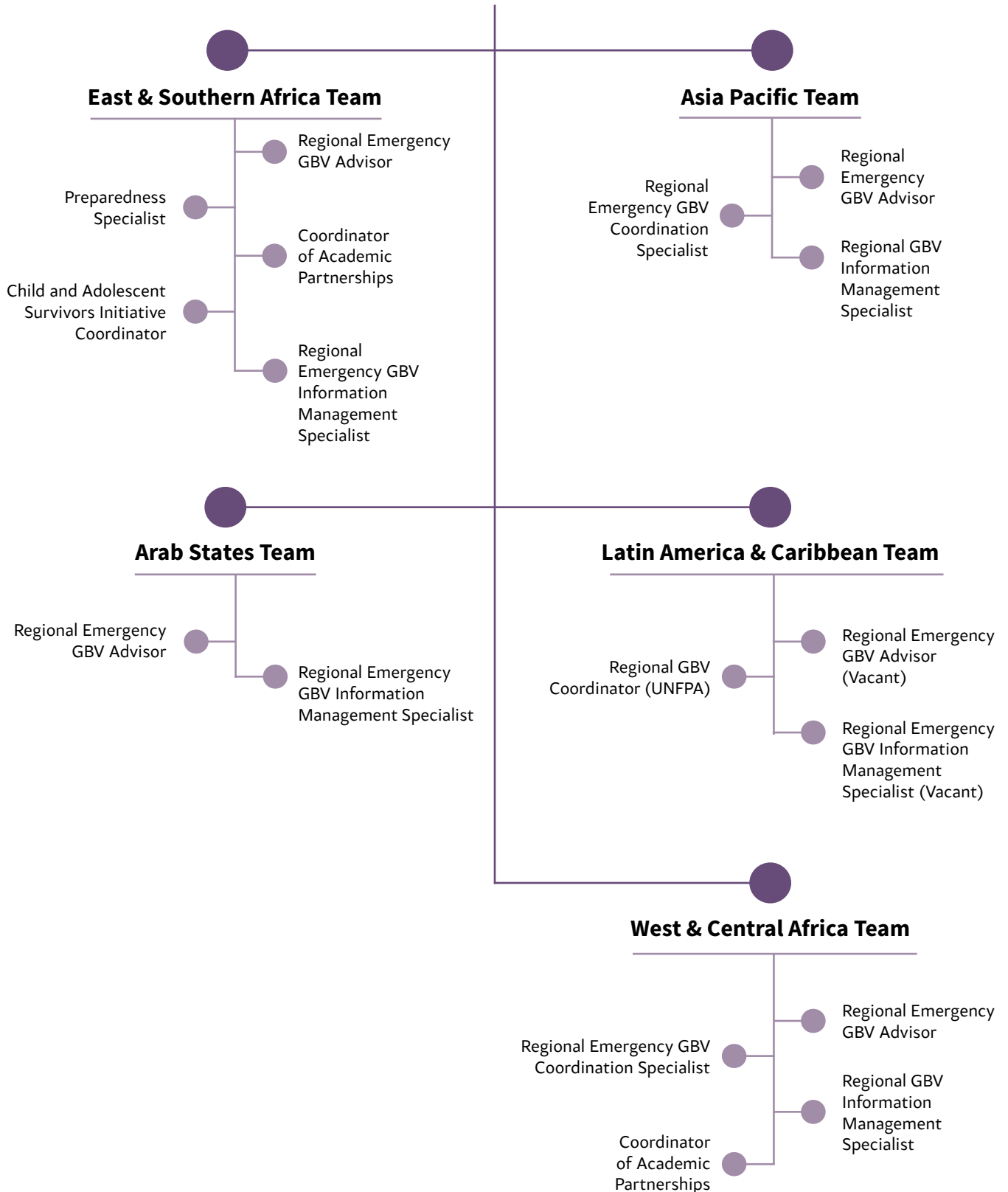
** Others context include; anticipatory action, preparedness, contingency planning for disasters and mixed settings.



Cluster / Sector / Cluster-like Context:

- | | | |
|--------------------------|-------------|--|
| Afghanistan | Honduras | Sudan |
| Bangladesh (Cox's Bazar) | Iraq | Ukraine |
| Burkina Faso | Mali | Venezuela |
| Burundi | Mozambique | Whole of Syria (Amman based) |
| Cameroon | Myanmar | Whole of Syria - Government of Syria controlled areas (Damascus based) |
| Central African Republic | Niger | Whole of Syria - Turkey Cross Border (Gaziantep based) |
| Chad | Nigeria | Whole of Syria - North-East Syria (NES based) |
| Colombia | Palestine | Yemen |
| Congo, Dem. Rep. | Somalia | Zimbabwe |
| Ethiopia | South Sudan | |

GBV AoR Coordination Team



GLOSSARY



4Ws	Who, When, Where, What	OCHA	United Nations Office for the Coordination of Humanitarian Affairs
AoR	Area of Responsibility	PARG	GBV AoR Policy and Advocacy Reference Group
AUN	American University of Nigeria	REGA	Regional Emergency GBV Advisor
CAR	Central African Republic	REGIM	Regional GBV in Emergencies Information Management Specialist
CASI	Child and Adolescent Survivors Initiative	REGS	Regional GBV in Emergencies Specialist
DRC	Democratic Republic of the Congo	RGA	Rapid Gender Analysis
DTM	Displacement Tracking Matrix	SADC	Southern African Development Community
EAC	East African Community	SDC	Swiss Agency for Development and Cooperation
ECOWAS	Economic Community of West African States	SOPs	Standard Operating Procedures
GBV	Gender-Based Violence	UNFPA	United Nations Population Fund
GBV AoR	Gender-Based Violence Area of Responsibility		
GBViE	Gender-Based Violence in Emergencies		
GBVIMS	Gender-Based Violence Information Management System		
GIHA	Gender in Humanitarian Action		
GPC	Global Protection Cluster		
HNO	Humanitarian Needs Overview		
HRP	Humanitarian Response Plan		
IASC	Inter-Agency Standing Committee		
IM	Information Management		
JIAF	Joint Inter-Agency Analysis Framework		
MEL	Monitoring Evaluation and Learning		
MSNA	Multi-Sectoral Need Assessment		



EXECUTIVE SUMMARY



The REGA¹ project was established in 2014 as a resource for the Gender-Based Violence Area of Responsibility (GBV AoR) to support country-level gender-based violence (GBV) sub-clusters. The term REGA has been used both to refer to the REGA team lead, and more broadly for the regional GBV AoR support teams and the strategic partnership project/mechanism set up by UNFPA, NORCAP and the GBV AoR. The GBV AoR is a functional component of the Global Protection Cluster. UNFPA is the lead-agency of the GBV AoR.

During 2020, the GBV AoR regional support teams strengthened GBV coordination in emergencies in 24 countries. COVID-19 necessitated moving to remote assistance. REGA teams were bolstered by the arrival of new regional experts in information management (IM), rapid response, GBV preparedness and academic partnerships. Despite the hurdles related to the pandemic, regional and country level advocacy and technical support for the GBV community continued across five regions². UNFPA provided effective management support through its regional and country operations.

The *Global Humanitarian Overview 2020* estimated approximately USD 16 billion was required to address global humanitarian needs of more than 168 million people, half of whom were women and girls. The COVID-19 pandemic substantially increased needs, adding an additional financial burden of USD 2.1 billion. Acute emergencies in Ethiopia, the Lake Chad Basin, Mozambique, Syria, the Sahel, and Yemen were aggravated during the year and protracted crises in Afghanistan, the Democratic Republic of the Congo (DRC), South Sudan and Sudan continued to demand attention.

The pandemic together with intensifying dialogue on climate change acted as catalysts for emphasis on preparedness action. REGAs in Asia-Pacific and East Africa engaged with regional intergovernmental bodies to institutionalise gender-progressive policies and helped country-level colleagues navigate and contextualise the anticipatory action framework of the United Nations Office for the Coordination of Humanitarian Affairs (OCHA). It's important to acknowledge UNFPA and partners' roles in bringing attention to GBV and gender within Anticipatory Action.

Responding to the pandemic, REGA teams joined forces and developed a global webinar series. Each week the teams invited experts to collaborate on sessions to present innovative guidance that met the evolving needs of GBV practitioners providing services amid COVID-19 restrictions. Hands-on operational support was accompanied by brief guidance notes and tools. Topics included remote case management and identifying considerations for localised and inclusive COVID-19

.....

- 1 The acronym REGA stands for Regional Emergency GBV Advisor.
- 2 Regional deployments were provided in five regions. See annexed table of deployments. REGA teams were based in Dakar, Cairo, Nairobi and Bangkok, for the West and Central Africa region, the Arab States region, Eastern and Southern Africa region, and Asia and the Pacific. In addition, a regional GBViE coordinator, reporting to UNFPA, within the REGA project was deployed to Panama in support of the regional platform. Recruitment in 2021 will initiate a REGA team in the Latin America and Caribbean region.

responses. Some webinars reached as many as 400 humanitarian workers in a single session, the majority local actors. Though the REGAs were unable to travel due to the spread of COVID-19 they provided more remote one-on-one mentoring and coaching throughout the reporting period. For example, the REGA team in Bangkok developed a coaching and mentoring format, piloted with two new national civil society GBV coordination co-leads, to aid the process of local organisations taking on new leadership positions. This model has the potential to be expanded to all regions.

Technical field support, training workshops and advocacy, even missions, were adapted to remote support modalities. For example, the GBV in Emergencies university course co-organised by the American University of Nigeria (AUN), UNFPA and the GBV AoR was delivered virtually. Remote missions to Afghanistan, Ethiopia, Guinea and Somalia were organised in addition to in-person missions to Burkina Faso, Central African Republic (CAR), Ethiopia, Rwanda and Zambia during the first quarter of the year, prior to the spread of COVID-19. REGA teams moved towards a more integrated model of field support, drawing on each other's skill sets to support Gender-based Violence in Emergencies (GBViE) leadership, coordination and IM. GBV sub-clusters have become more efficient as they deal with a single team providing a multidisciplinary approach to capacity development and technical support.

In 2020, GBV IM experts strengthened the technical and strategic capacity of GBV sub-clusters, particularly during development of Humanitarian Needs Overviews (HBNOs) and Humanitarian Response Plans (HRPs). They guided country-level colleagues through needs analysis, severity ranking and developing indicators that meet global monitoring and evaluation (M&E) standards. IM specialists developed tools that facilitated mapping of partners and development of referral pathways.

The expansion of human resources resulted in a stronger regional level footprint. For example, the team covering East and Southern Africa continued to strengthen the role of the Regional GBV Working Group for East and Southern Africa, a group created in late 2019 under the leadership of the REGA team in Nairobi. They developed advocacy briefs on Mozambique and Ethiopia, organised well-attended donor briefings on the impact of COVID-19 on women and girls, authored region-specific guidance focusing on service delivery during the pandemic and engaged with inter-governmental organisations such as the Southern African Development Community (SADC) and the East African Community (EAC), advocating to make their policies more gender-sensitive.

Another Working Group was established in 2020 for the West and Central African regions. The Asia-Pacific team continued to actively engage with existing coordination forums in their region such as the Gender in Humanitarian Action Working Group.

An important advocacy achievement in 2020 was raising the profile of GBV needs in the Central Sahel crisis. Multiple activities, culminated in a GBV-focused side event at the high-level humanitarian event on the Central Sahel organised by the EU, OCHA and Denmark. Also regional



teams in both Asia and the Pacific and in West and Central Africa successfully advocated with CARE International for the introduction of the *GBV Accountability Framework* in their operations in these regions. The regional teams supported the GBV AoR's global campaign on GBViE Minimum Standards, which was launched during the UN System's *16 Days of Activism Against Gender-Based Violence* from 25 November to 10 December. Podcasts, webinars and social media tools highlighting the Minimum Standards were developed and presented during the campaign and are helping develop more tailored support in 2021.

NORCAP demonstrated agility and flexibility in responding to travel and lockdown restrictions, enabling new REGA team members to be home-based when needed and also in ensuring safety of staff, resulting in strengthened GBV AoR field support in response to the increase in field requests for technical support and guidance.

Strategy consultations were undertaken with field GBV sub-clusters, GBV core members and humanitarian partners by an independent consultant. This was part of the review of the *GBV AoR Strategy (2018-2020)*, to take stock of progress and also to inform the strategy consultations for the new *GBV AoR Strategy (2021-2025)*. The consultations noted the excellent technical advice



and support to the field. All stakeholders were positive about the growth of the REGA teams. The effectiveness and importance of the work of the REGA teams on strategic advocacy and on convening and fostering coordination and inter-agency collaboration was highlighted as a key achievement in the three-year strategic period. There was broad recognition that the GBV AoR and NORCAP have been successful in targeted recruitment that matches the skills required for strategic results.

In the words of one respondent, **“The REGAs were very supportive in co-facilitating capacity-building sessions, leading advocacy efforts with other technical groups and ensuring that positive coordination takes place with technical capacity support available for all. They have been quite amazing at brainstorming strategic collaboration initiatives.”**

1. INTRODUCTION



The REGA project was established in 2014 as a resource for the Gender-Based Violence Area of Responsibility (GBV AoR), a functional component of the Global Protection Cluster, in order to support country-level GBV sub-clusters. The REGA teams build sustainable long-term capacity at country and regional levels rooted in the needs of the GBV sub-clusters – national, subnational and local actors. In doing so, the GBV AoR works to address the full cycle of emergencies: preparedness and GBV risk reduction and mitigation, response, recovery and transition, in addition to building the leadership of national partners for sustainable solutions.

The REGAs conduct inter-agency missions, in-country and/or remotely, and provide ongoing advice, coaching and mentoring to build coordination leadership and enhance cluster response capacity. They develop and co-facilitate inter-agency capacity building workshops on Inter-Agency Standing Committee (IASC) cluster accountabilities, the *Handbook for Coordinating Gender-based Violence Interventions in Emergencies*, the *Inter-Agency Minimum Standards for Gender-Based Violence in Emergencies Programming*, on ethical data collection and analysis to support countries with the integration of GBV into the Humanitarian Programme Cycle, high level advocacy and implementation of the *Centrality of Protection*. They also ensure contextualisation of prevention and response in GBViE and harmonisation with other humanitarian and development initiatives. Finally, they increasingly support local authorities striving towards more sustainable outcomes and localised responses.

The new *GBV AoR Strategy (2021-2025)* emphasises the enabling role of the REGA. The strategy guides the work of the regional support teams, resulting in prioritised field support in line with the collective strategic objectives.

The REGA project is based on a strategic partnership between UNFPA, NORCAP and the GBV AoR. NORCAP is the employer of the REGA and is responsible for related REGA roster management. NORCAP influences the programmatic approach of the REGA via the Monitoring Evaluation and Learning (MEL) expert who liaises between the GBV AoR and NORCAP. UNFPA facilitates REGA deployments, provides management and logistical support at regional and country level, in line with its lead-agency role, ensuring linkages with GBV surge capacity and investment in GBV sub-cluster field capacity.



2. OVERVIEW OF THE SCALE-UP



Consultations with the GBV AoR community have confirmed the need for an increased focus on training and capacity building of local actors, as well as a continued strengthening of IM to provide further evidence for a quality response, advocacy for strategic decision making, ensuring country-level compliance with coordination standards and adaptations to challenges of COVID-19.

In 2019, the GBV AoR, NORCAP and UNFPA agreed to scale up REGA, expanding geographic reach and introducing new expertise. During 2020 REGA teams were strengthened with Regional Emergency GBV Coordination and Regional GBV IM specialists. In two regions, GBV Capacity-building specialists joined the REGA project, to strategically partner and institutionalise learning programmes with universities, forging locally and regionally owned opportunities for academic and professional development with the University of Nairobi (UoN) and AUN.



The expected outcomes of the REGA Scale Up:

I. STRENGTHENED GBV RESPONSE – GBV sub-clusters have an increased capacity to perform core coordination functions and advance key deliverables.

II. INTEGRATION OF GBViE ACROSS RESPONSE – Humanitarian actors have increased awareness and are supported in their efforts for GBV to be central to humanitarian action.

III. INCREASED EVIDENCE BASE – GBV sub-clusters have increased capacity in GBV Information Management, underpinning a stronger technical and strategic inter-agency engagement.

IV. CONTEXTUALISED, LOCAL AND REGIONAL LEARNING OPPORTUNITIES – GBV specialists at regional and country levels are coached through twinning, mentorship and training, to improve the capacity of actors to provide multi-sectoral care for GBV survivors in the longer term. In doing so, the REGA will build on current partnerships with academic institutions from the global south and partner with other relevant national or local institutions.

3. 2020 HIGHLIGHTS



Success Story – High Impact Advocacy on policy in Zimbabwe

The REGAs supported field-level GBV Coordinators and GBV coordination mechanisms in advocating for continuity of essential and lifesaving health services for GBV survivors during the COVID-19 crisis. This was crucial given that continuation of GBV services was not categorically declared by most governments as essential during lockdown measures and travel restrictions. It also supported advocacy to retain human resources and provide adequate support, including infection prevention and control measures such as supply of personal protective equipment for face-to-face services in contexts in which frontline GBV service providers were diverted to COVID-19 response.

The REGA in East and Southern Africa supported the GBV coordinator in Zimbabwe to designate GBV service providers as “essential workers”. Evidence from other countries in the region was collated as part of advocacy with Zimbabwean policy makers. The REGA on behalf of the Regional GBV Working Group developed a ToR for researchers at the GBV AoR Helpdesk who produced a comprehensive Position Paper that looked at norms in other countries. The Coordinator in Zimbabwe noted that this document provided an extremely useful foundation for developing her own briefs. As a result, GBV workers were eventually designated as “essential workers” in Zimbabwe.

1. COVID-19 adaptation: new countries, webinars, guidance notes.

The Regional GBV AoR teams adapted their activities and services at the onset of the COVID-19 pandemic. Additional countries were covered by regional GBV teams as

part of the GBV response to the Global Humanitarian Response Plan (GHRP), including support for new countries to set up a GBV coordination group, develop or update referral pathways, to advocate for recognising GBV services as essential and to integrate GBV actions in preparedness and contingency planning.

Targeted guidance and resources were developed by the regional GBV teams to support existing GBV sub-clusters in adapting their services to the new modality of working, and to respond to front-line workers' increased needs and queries. For example, at the very onset of the pandemic the REGA in East and Southern Africa produced a briefing note in partnership with members of the Regional GBV Working Group, that listed priority actions for coordination mechanisms to better understand the impact of the pandemic on women and girls. Feedback from GBV coordinators indicated this document

enabled sub-national GBV coordination members to focus their efforts in a highly chaotic time.

At the outset of the pandemic, the REGA conducted a weekly seminar series of seven episodes, creating a space for local and international GBV responders to share learning across contexts and regions. This aided dissemination of the new COVID-19 guidance notes by the REGA on contingency planning for COVID-19, a remote GBV service mapping template, remote programme delivery and staff care and support during the pandemic.

Reaching more than 400 humanitarian actors through English webinar, and 160 through French webinars

Scan here to access the COVID-19 webinar series.



- Impacts of COVID-19 on Women and Girls (EN/FR)
- COVID-19: Undertaking Remote GBV Assessments and Transitioning to Remote Service Delivery (EN/FR)
- Ensuring Continuity Of Essential Health Services For GBV Survivors During The COVID-19 Crisis (EN/FR)
- Mobilizing Resources For GBV Programming and Coordination in COVID-19 Response (EN/FR)
- Adapting GBV Case Management During COVID-19 Response (EN/FR)
- Emerging Practices For Localization On GBV Interventions In COVID-19 Response (EN/FR)
- Mitigating GBV Risks Among The Disabled, LGBTQIA, And Elderly During The COVID-19 Pandemic (EN/FR)



2. AoR Field Support to Priority Countries

Expansion of REGA teams enabled a more integrated approach to field support. UNFPA and the GBV AoR identified seven tier 1 and eight tier 2 countries, based on criteria such as ranking on the OCHA Risk Index, scale of humanitarian needs, in-country humanitarian capacity and resources available for field support, global advocacy, fundraising and more sustainable use of human resources. COVID-19 impacted GBV AoR country prioritisation, due to the increased need of support and funding to respond to the pandemic and address the added risks and challenges in the countries most affected.

Outcome of integrated REGA support	Countries
Increased global, regional and country level awareness of key GBV needs/ gaps and international standards/ frameworks	Afghanistan, Bangladesh, Burkina Faso, CAR, Cameroon, Ethiopia, Iran, Libya, Myanmar, Sudan, Pakistan, the Philippines, South Sudan and Syria.
Increased technical capacity for GBV coordination, information management/ data and response	Afghanistan, Bangladesh (Cox's Bazaar), Burundi, Burkina Faso, Cameroon, CAR, Côte d'Ivoire, DRC, Ethiopia, Guinea, Indonesia, Iran, Libya, Mali, Myanmar, Nepal, Nigeria, Pakistan, the Philippines, Papua New Guinea (PNG), Somalia, South Sudan, Sudan and Syria.
Reflection of field needs in global level advocacy	Afghanistan, Bangladesh (Cox's Bazaar), Burkina Faso, Burundi, DRC, Ethiopia, Mali, Niger, Somalia and South Sudan,
Reflection of global level advocacy in field-level planning and programming	Bangladesh (Cox's Bazaar), Burkina Faso, Burundi, Cameroon, CAR, Côte d'Ivoire, DRC, Guinea, Mali, Myanmar, Somalia and Sudan.

COUNTRY HIGHLIGHTS: AFGHANISTAN (ONE-MONTH VIRTUAL MISSION)

Afghanistan presents a highly complex humanitarian context, in terms of scale, security, access, political volatility and lack of funding. It was thus prioritised for intensive REGA support throughout 2020. The REGA team provided technical support to the COVID-19 response and induction of new civil society GBV co-leads. REGA advocacy enabled new investment in coordination, allowing the Afghanistan sub-cluster to have three coordinators (UNFPA, INGO and from one local organisation). The REGA team and the GBV AoR Policy and Advocacy Reference Group (PARG) supported the drafting of a note on GBV for the Afghanistan 2020 pledging conference held in Geneva in November 2020.

In July, the GBV sub-national coordination focal points, REGA and UNFPA surge staff collaborated to orient the enumerators for the annual, national survey on GBV Basics and Do No Harm. The REGA team drafted the first secondary data review in collaboration with the IASC GBV Guidelines team for Afghanistan so as to support HNO/HRP inputs. Additionally, the REGA team provided technical inputs to the WASH sector GBV risk mitigation plan, strategic planning, referral pathways, response monitoring and reporting, assessments, strategic decision-making, data analysis, cluster performance monitoring, service mapping and developing a GBV sub-cluster information management plan.

COUNTRY HIGHLIGHTS: ETHIOPIA

In recent years the REGA have provided significant capacity building to strengthen GBV response capacity via government social workers and case managers. Following the outbreak of armed conflict in the Tigray Region in November 2020 government services collapsed, resulting in the need for other actors to urgently provide GBV interventions.

The REGA was heavily involved in the Tigray response from the onset of the emergency and developed an external briefing note in partnership with national and regional working groups. She also provided extensive support during the development of a two-year Central Emergency Response Fund (CERF) proposal that focused exclusively on the Tigray response. Prior to the conflict, the REGA had delivered case management training for the GBV sub-cluster members, identified as the priority capacity gap.

The IM Specialist completed a four-month remote mission to Ethiopia (Sept. – Dec. 2020), supporting the GBV Coordinator during the development of the HRP, producing basic IM tools and supporting the Tigray response. The deliverables included the inclusion of safe GBV related questions in the rapid inter-agency assessment for Tigray, as well as the Displacement Tracking Matrix (DTM), secondary data review and GBV severity analysis for the HNO, including geographical distribution of target populations.

COUNTRY HIGHLIGHTS: BURKINA FASO

The Regional Coordination Specialist undertook two missions to Burkina Faso (December 2019 and March 2020), to help establish the GBV sub-cluster. He provided induction for the new national and sub-national GBV coordinators. ToRs and a three-month action plan were developed for the GBV sub-cluster to better integrate GBV into the HCT agenda and prioritise the work of GBV sub-cluster members, elect a co-lead and better integrate GBV into the United Nations Country Team (UNCT) protection strategy. Thus, Burkina Faso now has functioning referral pathways in key areas and a comprehensive mapping of underlying capacity gaps.

During the last quarter of 2020, Burkina Faso was identified as a priority country for the Global Protection Cluster (GPC), due to the scale of the crisis, underfunding and need for increased capacities. The GBV sub-cluster is participating in a peer-to-peer group for all GBV coordinators in operations working in Francophone countries. This is facilitated by the REGA.

Data from 2020 Feedback Survey, based on a total of 31 respondents:

- 93.5% of respondents reported that the support provided by the REGA teams addressed the needs that were raised.
- Much of the support provided required integrated support from the team, including not only the REGA, but also the REGIM, REGS, but also to a lesser extent the Coordination Team in Geneva.
- 23 respondents reported that additional needs were raised because of engagement with AoR Regional teams in their support requests.

Of these, 61.5% reported that these additional needs were addressed, while 23.1% reported that these additional needs have been flagged for follow up at a later stage.

When asked to rate their level of satisfaction with the support provided in relation to the needs identified, on a scale of one to seven, 23 respondents gave a score of six or seven and 6 respondents gave a score of four or five.

Respondent A: "The Advisor immediately took my suggestion to develop a GBV working group and acted on it. Since then this working group has proven so effective, particularly during COVID-19. The advisor's professionalism and collaborative attitude and skills have drawn the attention of many GBV actors, with a priority on GBV."

(IM feedback survey)

Respondent B: "The REGAs were very supportive in co-facilitating capacity-building sessions, leading advocacy efforts with other technical groups, and just ensuring that positive coordination takes place with technical capacity support available for all. They have been quite amazing at brainstorming strategic collaboration initiatives."

(IM feedback survey)

3. Technical IM Support in four regions

During the second half of 2020, Regional GBV Information Management Specialists (based in Bangkok, Cairo, Dakar and Nairobi) provided extensive bilateral technical support to twenty GBV sub-clusters in four regions. They responded to a high demand for support on how to engage and navigate inter-agency planning and analysis, to determine severity and calculate People in Need (PIN), costing and develop indicators to inform GBV sector needs and plans. They additionally helped the integration of GBV into the OCHA-led inter-agency analytical framework and multi-sector needs assessments. Significant support was also provided to ensure robust service mapping, enabling GBV sub-clusters to identify gaps and communicate referral pathways to affected communities. In West and Central Africa, some GBV Sub Clusters (in Burkina Faso, Mali and Nigeria) regularly organised GBV safety audits.

ANALYSIS OF GBV IN 2021 HPC STRATEGIC DOCUMENTS SHOWED SIGNIFICANT IMPROVEMENTS IN 2020

89%

of the HNOs (of 19 HNOs) had GBV integrated throughout the crisis and impact sections, which allowed for a clearer understanding of how emergencies disproportionately impact women and girls.

84%

of HNOs had People in Need calculated separately for GBV, enabling clear targets and a more accurate estimate of financial requirements.

79%

of HRP (of 18 HRPs) flagged GBV under humanitarian conditions, underlying factors or when describing strategic objectives.

82%

of HRPs had a dedicated space for GBV response strategy, resulting in increased visibility.

All HRPs except one had a clear financial request relating to GBV.

These strong results are attributed to field GBV coordination teams, backed up by REGA and GBV IM technical support.

Footnote: GBV AoR Analysis of GBV in 2021 Humanitarian Needs Overviews and Humanitarian Response Plans. The report included an analysis of 19 HNOs and 18 HRPs.

REGIONAL HIGHLIGHT - IM SUPPORT TO ARAB STATES REGION (STARTING SEPTEMBER 2020)

The regional IM specialist for the Arab Region provided in-country support to Libya for the finalisation of the HNO/HRP processes and produced IM tools on behalf of members. Deliverables included an analysis of data sources, data crunching of the Libya Multi-Sectoral Needs Assessment (MSNA), drafting and definition of a methodology for GBV severity calculation, People in Need (PIN) calculations as well as targeting and costing. The REGA team also developed with the country team a mid-long term IM capacity building and support plan to address long-standing gaps. In-country support was also provided to Sudan from September to December, focusing initially on the assessment and analysis of existing MSNA data for their use in the HNO. In addition, assistance was provided for the consolidation, gap analysis and data collection of 4Ws (Who, What, Where, When) data. First drafts of public dashboards and a monitoring framework were also finalised and endorsed. Support in Yemen focused on knowledge sharing of good

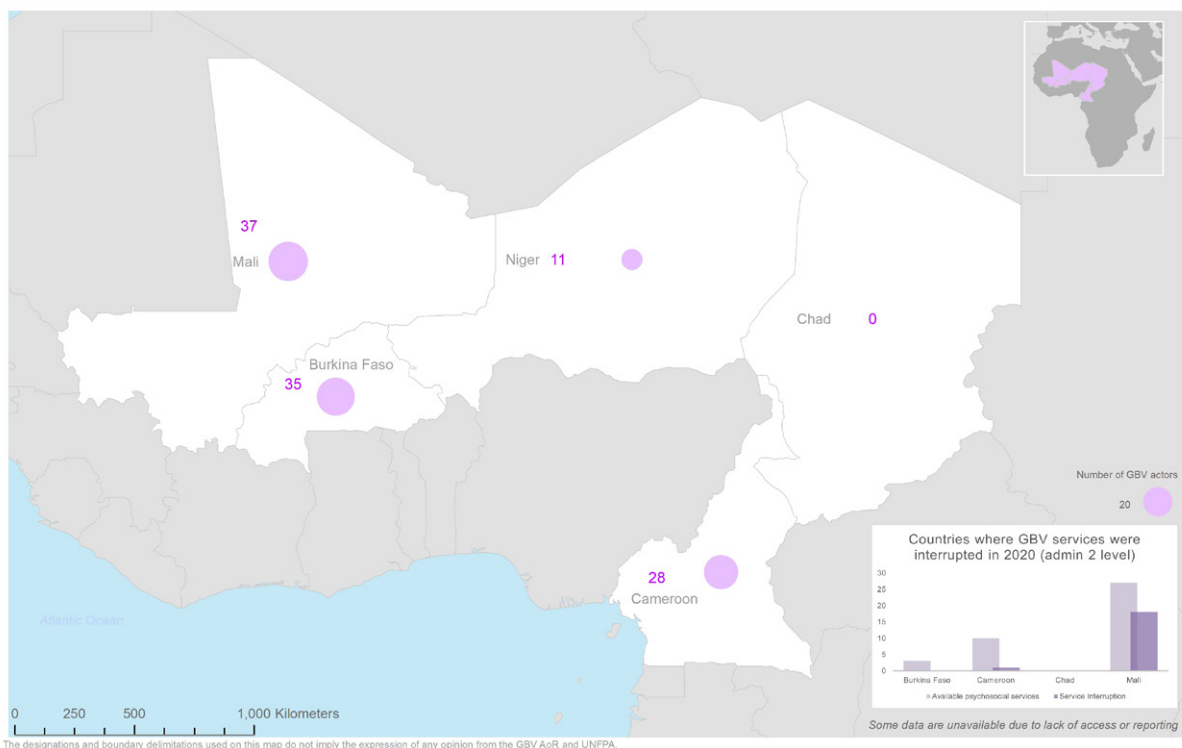
practices, experience with existing tools and methodologies used in other countries in the region when preparing HNOs. Guidance and mentoring were provided on the selection of HNO indicators as well as applying the Joint Inter-Agency Analysis Framework (JIAF). While participating in discussions on roll-out of the GBVIMS (Gender-Based Violence Information Management System) rollout, collaboration with colleagues in the Occupied Palestinian Territory (oPt) targeted the planned rollout of a service mapping tool and further took the form of ad hoc guidance on indicators selection. Furthermore, connections were strengthened with all countries with GBV coordination groups within the Arab States Region.



West and Central Africa - Sahel

Gender based violence service providers in selected Sahel countries

December 2020



The Regional IM specialist for West and Central Africa developed a Dashboard which initially included protection monitoring trends for GBV, GBV service provision in the region, trends in case management, child marriage trends due to COVID-19 and an assessment of the impact of COVID-19 and GBV response in the region. Moving forward, it is hoped to gradually improve regional analysis of mapping of available services, secondary data reviews and risk mitigation (safety audit) and to then roll these out in each region.

Respondent C: "Fast replies and very good technical support received for a specific need related to Information Management." (IM feedback survey)

Finally, the REGA IM teams provided a global webinar/discussion entitled *Activity Costing - troubleshooting and way forward* in Nov. 2020, targeting all GBV coordinators and Information Management Officers. Forty participants from different countries gathered to analyse pros and cons of activity-based costing and to lay the foundation for a common understanding and a way forward. The increased capacity to engage in activity costing methodology is a milestone for the GBV AoR. This is a complicated exercise due to the particularities of GBV prevention, mitigation and response. It is important as more and more contexts are engaging in inter-agency non-project-based planning.

Respondent D: "The regional IMO support during the HRP has been of great value and cannot be highlighted enough!"

4. Other Missions

With the Covid-19 pandemic, REGA in-country missions came to a halt in February 2020, as activities moved to remote support modalities. The teams conducted remote country missions that included collaboration with GBV sub-clusters and participation in country-level processes over several weeks. In particular, remote mission support to Afghanistan and Guinea was successfully structured.

OTHER MISSIONS/FIELD SUPPORT:

The Philippines

In collaboration with CARE and UNFPA, the Asia-Pacific REGS provided support to conduct an inter-agency Rapid Gender Analysis (RGA) for the Philippines following the Taal Volcano eruption in January 2020. The mission culminated in advocacy with the national government that led to the adoption and implementation of a subsequent RGA for the COVID-19 response.

Guinea (in-country and remote support)

The mission resulted in the establishment of a new GBV coordination group, identification of urgent actions and strengthened capacity on GBV preparedness, risk mitigation, response and COVID-19 contingency planning. Observers from the Economic Community of West African States (ECOWAS) and journalists were trained on GBV prevention and response in the run-up to presidential elections. An emergency contact list of GBV providers was established and service mapping initiated. The Dakar team also provided inputs to inter-agency rapid assessments and strategic planning.

4. BROADER CAPACITY BUILDING AND UNIVERSITY PARTNERSHIPS



From April to August 2020 the Asia-Pacific REGA team conducted a series of multi-part learning sessions on GBViE. The training targeted two groups, comprising 172 individuals, with immediate capacity to provide additional GBV support and services and risk mitigation measures throughout the region. In collaboration with UN Women and the International Labour Organization (ILO), a four-part GBViE series provided orientation on coordination, emergency referral systems and GBViE inter-agency minimum standards. This training enabled closer collaboration between GBV development and humanitarian actors in Indonesia, Myanmar and the Philippines, as well as cross-border collaboration to build the capacities of GBV responders who address the needs of migrant workers. A second three-part training series was created in collaboration with World Vision International which operates one of the largest scale surge rosters in the region. This covered disaster response in both development and humanitarian settings.

Academic Partnerships

University of Nairobi (UoN) GBViE Postgraduate Diploma Course

Building on the foundation and success of this GBViE certificate course completed by over a hundred people – some of whom immediately found employment by humanitarian agencies, in 2020, the University of Nairobi with technical support from the GBV AoR embarked on developing an innovative GBViE online postgraduate diploma course to increase the number of GBViE specialists working in humanitarian contexts and to ensure field staff have advanced knowledge of global standards. The programme also seeks to address the gap of limited qualified GBV specialists available for deployment when emergencies occur, especially in the East Africa Region.

COVID-19 restrictions on movement called for virtual consultations to develop the curriculum in 2020, in lieu of face to face meetings with the relevant national, regional and global experts. The goal is to launch the diploma course in early 2022.

Building Capacity of Local Actors in Nigeria

The REGA team is leading an innovative capacity building programme in collaboration with the American University of Nigeria (in Yola) (AUN), UNFPA and the GBV AoR. The programme builds on experience from the Nairobi university programme, contextualised to needs in Nigeria.

Centered around the GBV AoR Minimum Standards, the programme links theory with practice through complementing classroom sessions with internship opportunities for graduates in organisations that manage GBV interventions as well as through coaching with in-country and global GBV practitioners. This programme was initiated under the Road Map of the Call to Action for Northeast Nigeria in response to a request by local actors in northeast of Nigeria for a dedicated GBViE learning programme.

In July 2020, a total of 33 participants (70 per cent female) were admitted to the second cohort and the first fully virtual course. Participants were drawn from nine states within Nigeria and from Ethiopia and South Sudan, and represented local organisations, line ministries of justice, women affairs and social development, health, defence and security, in addition to academia, I/NGOs and the UN. Priority was given to women and regions experiencing humanitarian crises.

Child and Adolescent Survivors Initiative

Two Child and Adolescent Survivors (CASI) coordinators (working across GBV and Child Protection AoRs) provided remote support to various countries. They promoted inclusion of children and adolescents via cooperative approaches (such as during Niger’s HNO and HRP processes) and supported more predictable cooperation on care for child and adolescent survivors in respective Standard Operating Procedures (SOPs). The GBV AoR-based CASI coordinator supported coordination groups in South Sudan and Sudan to identify gaps in coordination of services for child and adolescents’ survivors of GBV including sexual violence. Two countries - the Philippines and Kenya - were selected to conduct a participatory analysis of the barriers that adolescent survivors face in accessing quality services. Due to COVID-19-related restrictions, the implementation of the barrier analysis was not completed in 2020 and is currently being undertaken.



Strengthened Regional GBV Coordination

There is an active Regional GBV Working group in the East and Southern Africa region that was created by the REGA in the last quarter of 2019. It is co-chaired by the International Rescue Committee (IRC) and the GBV AoR under UNFPA leadership. There are approximately 25 member organisations participating across five pillars: IM, Intersectionality, Preparedness, Advocacy and Emerging Crisis. Each pillar is co-led by member organisations. Members work toward completing a work plan at the beginning of each year. The Regional Team in East and Southern Africa now has a specific focus on preparedness, led by the Regional GBV Specialist.

West and Central Africa GBV working group.

This was created in May 2020, following a GBViE consultation organised by the REGS and UNFPA in late 2019. Several regional partners, GBV sub-clusters and a few countries focused on preparedness, identifying the need for a regional mechanism. Consultations with GBV AoR core members and lead agencies in the region led to the launch of a group by the UN Refugee Agency (UNHCR) and UNFPA regional directors. The group has approximately 25 members, is coordinated by the GBV AoR under UNFPA leadership, and by the end of 2020 had completed 60 per cent of activities under the work plan (June 2020 - May 2021).



5. ADVOCACY



The regional teams engage in strategic advocacy efforts at field, regional and global levels so as to create and leverage regional and global advocacy platforms, support resource mobilisation, promote collective action to scale up GBV prevention, risk mitigation and response and to ensure accountability of all stakeholders to GBV survivors. Below are some examples.

Ensuring continuity of essential health services for GBV survivors during the COVID-19 crisis:

Although the global GBV AoR webinars on GBV and COVID-19 (March to April 2020) mostly involved technical support, they also featured a specific session on highlighting the need for continuity of essential and lifesaving health services for GBV survivors despite lockdown challenges. This builds on the Global GBV AoR's existing relationship and contacts with Health Cluster and the World Health Organization. The webinars supported dissemination of WHO guidance. The webinars were also able to engage Health Cluster actors, which facilitated field level advocacy by GBV Coordinators. The REGAs continued advocating for GBV needs during the pandemic with a GBV AoR briefing (May 2020). This also provided recommendations on GBV requirements resulting from the pandemic for global and regional donor representatives.

GBV Accountability Framework: Leadership Outreach

In July 2020, the REGA team in the Asia-Pacific region led the first inter-agency discussion of the GBV Accountability Framework with the IASC Regional Directors, in collaboration with CARE and the regional Gender in Humanitarian Action (GIHA) group. The directors adopted action points that require receiving regular briefings on inter-agency progress made on key GBV and gender indicators. As a result, there are specific GBV and gender agenda items during the biannual leadership meetings, a commitment to monitor progress on key indicators and more space to amplify complementary messaging. In December 2020, the REGA provided updates on progress and gaps, and the Regional Directors endorsed the 16 Days of Activism campaign. Furthermore, in response to COVID-19, the REGA team convened quarterly regional ad-hoc GBViE meetings, which are continuing in 2021. In October 2020, the REGA team in West and Central Africa engaged senior inter-agency leadership in Dakar on regional implementation of the Gender-Based Violence Accountability Framework together with CARE and partners of the Regional Gender-Based Violence Working Group. The GBV working group biannually reports to senior leadership on progress on regional implementation of the framework.

High Level Humanitarian Event on the Central Sahel

The Governments of Denmark and Germany, in partnership with the European Union and OCHA hosted a high-level humanitarian event on the Central Sahel (Burkina Faso, Niger and Mali). This involved a meeting with senior officials in September 2020 and a ministerial round table in October. The REGA worked with the Regional Protection Working Group and OCHA at regional level to integrate key elements for GBV prevention and mitigation in two thematic areas – protection and access to social services. Additionally, in October, UNFPA, the GBV AoR, Plan International and Care International organised a side event alongside the ministerial roundtable that gave voices to girls and service providers and enhanced political dialogue. The REGA and the Policy and Advocacy Reference Group (PARG), in collaboration with the Regional GBV Working Group for West and Central Africa, produced a note that has continued to support advocacy efforts for the three countries.



6. RISING TO THE CHALLENGE: A YEAR OF TRANSITION



2020 was an unusual year, and for the REGA team one of transition and scale-up. New experts joined the regional teams, paving the way for a more integrated approach to field support. Increased focus on IM has enabled the GBV AoR to take a substantive leap forward in terms of technical and strategic engagement.

The COVID-19 pandemic provoked abrupt change, exacerbated humanitarian needs and highlighted the urgency of intensifying and expanding capacity building. The REGA teams were also negatively impacted. Some colleagues contracted the virus, suffered from connectivity constraints when working remotely and were challenged to balance work and parenting responsibilities.

Despite these hurdles, the REGA project demonstrated its agility and adaptability, providing cutting-edge guidance in real time to GBV actors across all regions and finding new ways of working. The impediment to travel paradoxically also created new spaces for longer-term sustained support modalities, including virtual mentoring, without the regular interruptions due to mission travel. In addition, the GBV AoR completed a final draft of its new GBV AoR Strategy (2021-2025) and work plan. The REGA teams contributed actively to the consultations, including leading discussions with GBV coordinators and other relevant stakeholders. The new strategy will provide a new direction for the REGA, offering a theory of change and a results framework to capture results. Key challenges still remain, including long-term sustainability of the REGA project through human resources and funding.

In summary, it is clear that the REGA project continues to be a responsive and flexible mechanism through which critical work is performed, supported and enthusiastically welcomed by a wide range of colleagues in the GBV sector.

ANNEX 1



REGIONAL TEAMS SCALE UP

Composition of REGA Teams

Region	Base	Deployee	Responsibilities	Time frame (contracts)
East and South Africa	Nairobi	Jessica Gorham	REGA team lead	January – December 2020
	Nairobi	Luana Desouza	SDC GBV Analyst/expert on mission (not under NORCAP, but integrated into REGA team)	January – September 2020
	Uganda (home)	Christine Apio	REGS: Preparedness (regional and country support)	January - December 2020
	Zimbabwe (home)	Grace Chirewa	Academic Partnership Coordinator: Nairobi University diploma course	May - December 2020
	Ethiopia (home)	Girum Beyene	Regional GBV Information Management Officer	August - December 2020
Arab States and North Africa	Cairo (Zimbabwe from March)	Alexina Rusere Role taken on by Tamah Murfet in January 2021.	REGA team lead	January – December 2020
	Italy (home)	Iosto Ibba	Regional GBV Information Management Officer	August - December 2020

Region	Base	Deployee	Responsibilities	Time frame (contracts)
West and Central Africa	Italy (home)	Noemi Dalmonte	REGA team lead	April - December 2020
	Dakar, (then DRC due to pandemic)	Oswald Chishugi	REGS: GBV Coordination including rapid response	January - December 2020
	Ireland (home)	Adish Maudho	Regional GBV Information Management Officer	August - December 2020
	Nigeria	Agnes Enid Koome	Academic Partnership Coordinator: GBViE modules and internship programme	January - December 2020
Asia and the Pacific	Bangkok	Leigh-Ashley Lipscomb	REGA team lead	January - December 2020
		Pamela Godoy	REGS: GBV Coordination and Preparedness	January - December 2020
	Pakistan (home)	Aijaz Asghar	Regional GBV Information Management Officer	August - December 2020
Latin America and the Pacific	Panama	Maria Ariza	Regional GBV Coordinator for Venezuela Response (UNFPA inter-agency position in support of refugee and migrant response)	January - December 2020
		Vacant	REGA team lead	Recruitment in 2021
		Vacant	Regional GBV IM	Recruitment in 2021
Global	Geneva	Emily Siu	MEL Expert: theory of change and results framework	April - December 2020



NorCap received generous funding in support of the 2020 REGA Scale Up from the Swiss Agency for Development and Cooperation (SDC), the Norwegian Ministry of Foreign Affairs and the Bureau of Population, Refugees and Migration.



Norwegian Ministry
of Foreign Affairs

